

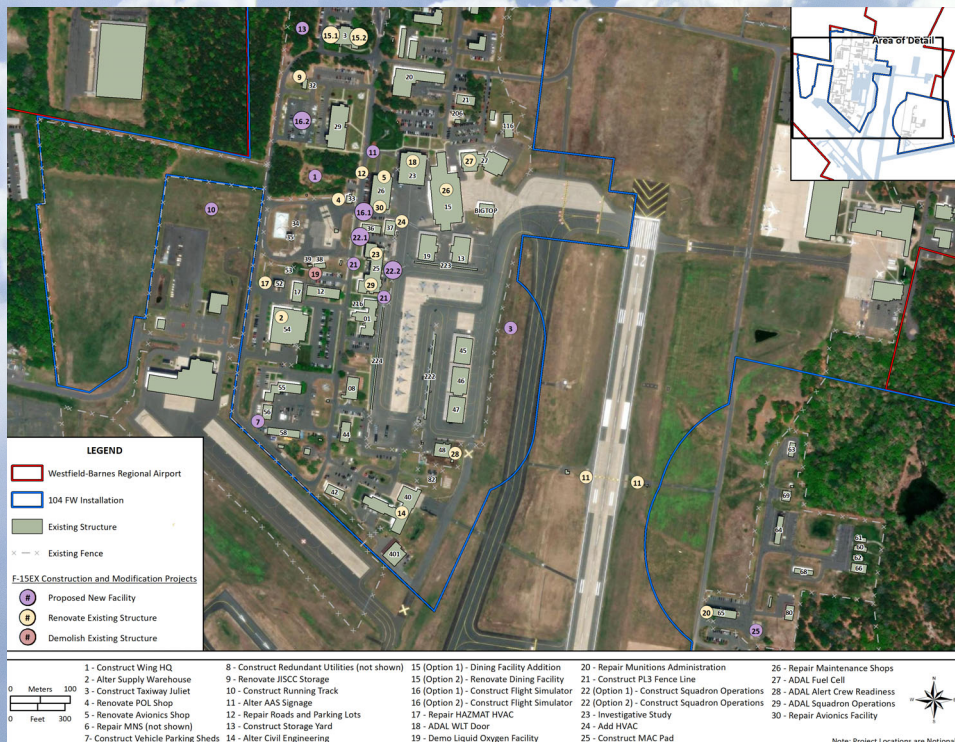


Air National Guard F-15EX Eagle II & F-35A Lightning II Operational Beddowns Environmental Impact Analysis Process

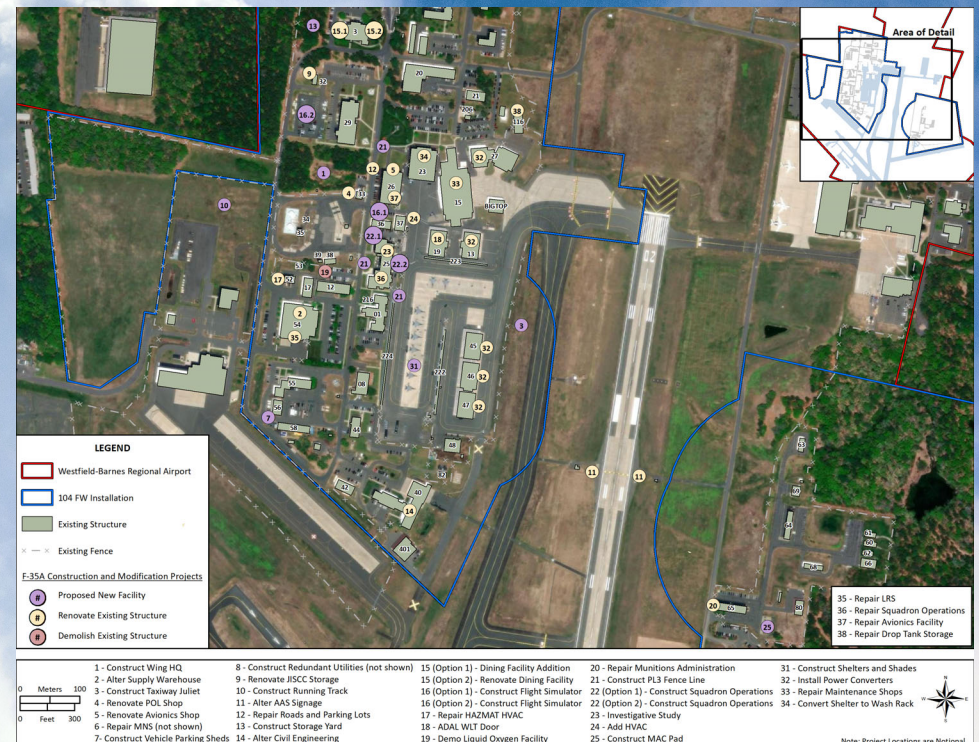


PROPOSED CONSTRUCTION AND MODIFICATIONS AT BARNES AIR NATIONAL GUARD BASE AT WESTFIELD-BARNES REGIONAL AIRPORT

While each of the three existing F-15C/D locations for the proposed beddown offer basic necessary facilities, no one location has all of the infrastructure and facilities to support the beddown, and the NAS Lemoore location has minimal existing infrastructure to support the beddown. To accommodate the F-15EX or the F-35A beddown, Barnes Air National Guard Base in Westfield, MA would require the facility construction and modifications displayed on the map. All construction activities would occur within the boundaries of the base.



F-15EX Construction and Modification Projects



F-35A Construction and Modification Projects