



Air National Guard F-15EX Eagle II & F-35A Lightning II Operational Beddowns Environmental Impact Analysis Process



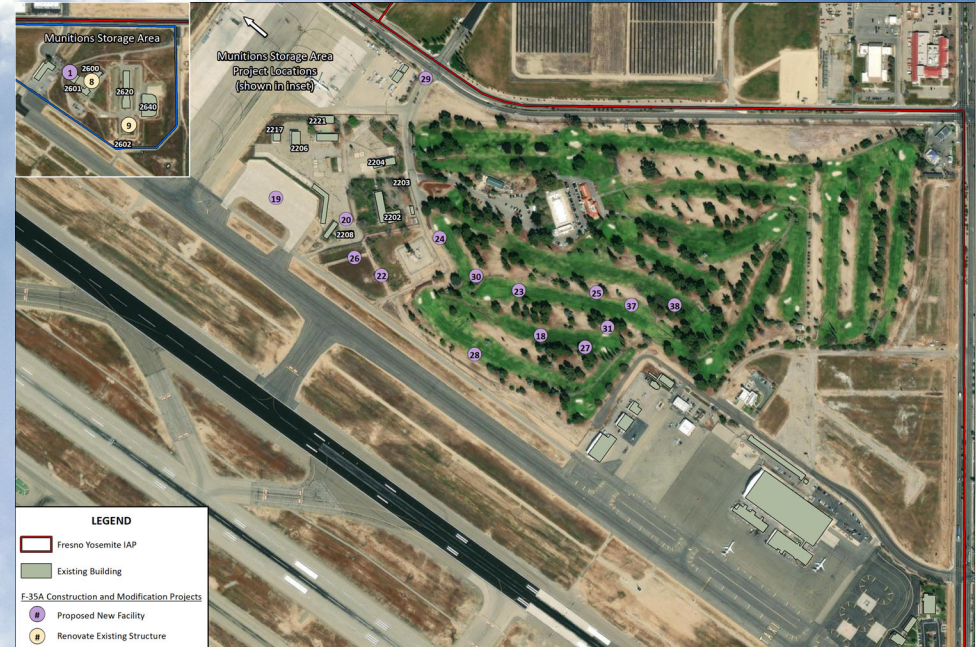
PROPOSED CONSTRUCTION AND MODIFICATIONS AT FRESNO AIR NATIONAL GUARD BASE AT FRESNO YOSEMITE INTERNATIONAL AIRPORT

While each of the three existing F-15C/D locations for the proposed beddown offer basic necessary facilities, no one location has all of the infrastructure and facilities to support the beddown, and the NAS Lemoore location has minimal existing infrastructure to support the beddown. To accommodate the F-15EX or the F-35A beddown, Fresno Air National Guard Base in Fresno, CA would require the facility construction and modifications displayed on the map. All construction activities would occur within the boundaries of the airport.



- | | | | |
|--|---|-----------------------------------|--|
| 1 - Construct Munitions Administration | 21 - Construct Utilities (Not Shown) | 27 - Construct WLT | 33 - Construct Engine Maintenance Shop |
| 8 - Repair M and I | 22 - Construct Fire Station | 28 - Construct Airfield Pavements | 34 - Construct CFT Facility |
| 9 - ADAL Building 2600 | 23 - Construct Main Hangar | 29 - Construct ECP | |
| 18 - Construct Satellite Composite Support | 24 - Construct Squadron Operations | 30 - Aircraft Support Equipment | |
| 19 - Construct Alert Spots 5 and 6 | 25 - Construct Fuel Hangar | 31 - Construct Hush House | |
| 20 - Construct Alert Crew Facility | 26 - Construct Small Maintenance Hangar | 32 - Construct FMS Facility | |

F-15EX Construction and Modification Projects



- | | | | |
|--|---|--|-----------------------------|
| 1 - Construct Munitions Administration | 21 - Construct Utilities (Not Shown) | 27 - Construct WLT | 38 - Construct FMS Facility |
| 8 - Repair M and I | 22 - Construct Fire Station | 28 - Construct Airfield Pavements | |
| 9 - ADAL Building 2600 | 23 - Construct Main Hangar | 29 - Construct ECP | |
| 18 - Construct Satellite Composite Support | 24 - Construct Squadron Operations | 30 - Aircraft Support Equipment | |
| 19 - Construct Alert Spots 5 and 6 | 25 - Construct Fuel Hangar | 31 - Construct Hush House | |
| 20 - Construct Alert Crew Facility | 26 - Construct Small Maintenance Hangar | 32 - Construct Engine Maintenance Shop | |

F-35A Construction and Modification Projects