

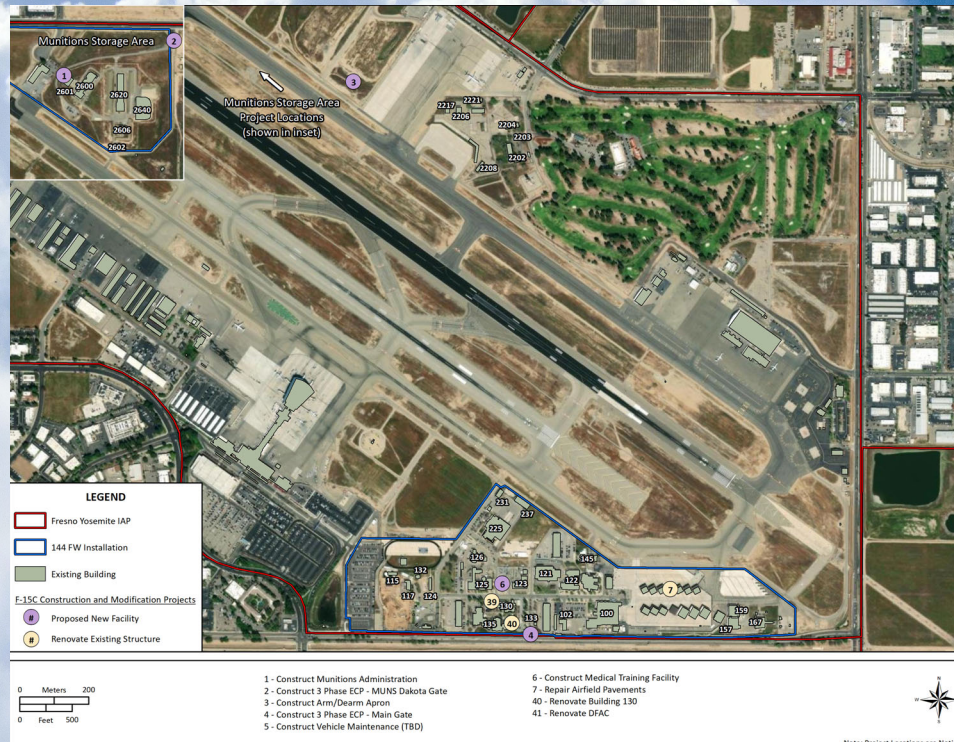


# Air National Guard F-15EX Eagle II & F-35A Lightning II Operational Beddowns Environmental Impact Analysis Process



## PROPOSED CONSTRUCTION AND MODIFICATIONS AT FRESNO AIR NATIONAL GUARD BASE AT FRESNO YOSEMITE INTERNATIONAL AIRPORT

While each of the three existing F-15C/D locations for the proposed beddown offer basic necessary facilities, no one location has all of the infrastructure and facilities to support the beddown for either aircraft, and the NAS Lemoore location has minimal existing infrastructure to support the beddown. Should neither F-15EX or the F-35A be beddown at Fresno Air National Guard Base at Fresno Yosemite International Airport, the following construction and modification projects would be required to continue operating legacy F-15C/D model aircraft for the remainder of the aircraft lifespan.



### Legacy Construction and Modification Projects